



Carmarthen and District Angling Club

Founded 1953

PINS RECEIVED

15 JAN 2016



Your Ref: END20016
14th January, 2016.

Dôlawel,
Llanddarog,
Carmarthen,
SA32 8NU

Dear Sir,

Western Power Division
Brechfa Forest Connection

I have recently been handed your letter dated 11th January, 2016, addressed to the Trustees of the above club, and I can also confirm that I have not received any previous correspondence with regard to this matter.

The club of course do own and control water on the rivers Tywi, Lrothi, Lymili, Tâf and the Llywendraeth Fach at Llandyfaelog, and I also note from the local press this week that Western Power Distribution (South Wales) PLC have submitted an application for a development consent order to build, maintain and operate a (132 KV) connection between Brechfa Forest West Wind Farm and Llandyfaelog.

I enclose for your information a copy of the maps of club waters, and it would be appreciated if you could confirm whether any water controlled by the club will be adversely affected by this scheme.

Yours faithfully

HON. CHAIRMAN

Carmarthen and District Angling Club The Cwm



The Cwm

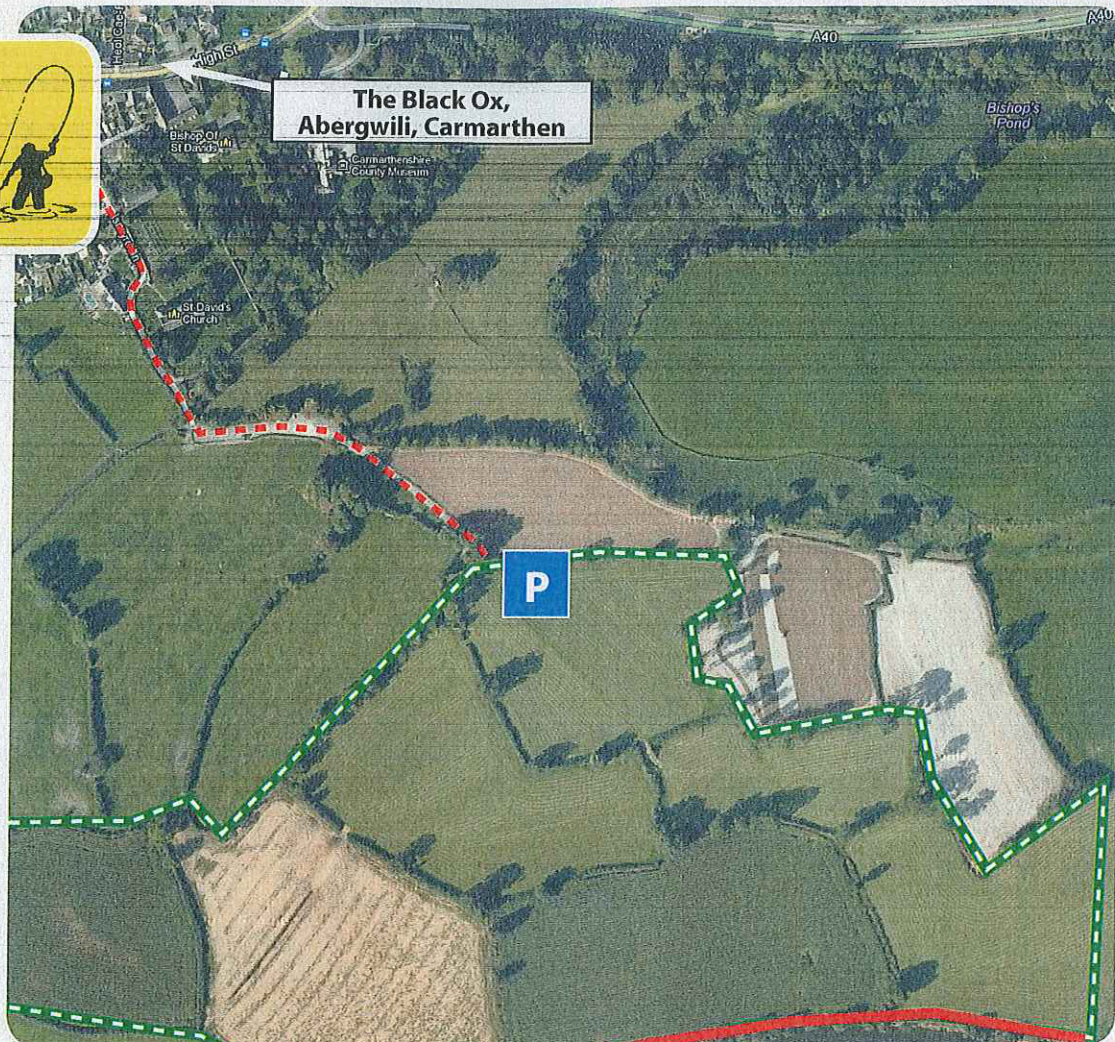
Driving through Abergwili, turn directly opposite the The Black Ox pub. Follow road past the church to the end. Drive through compound, down the lanes until you see the Carmarthen District Fishing Carpark.

Key

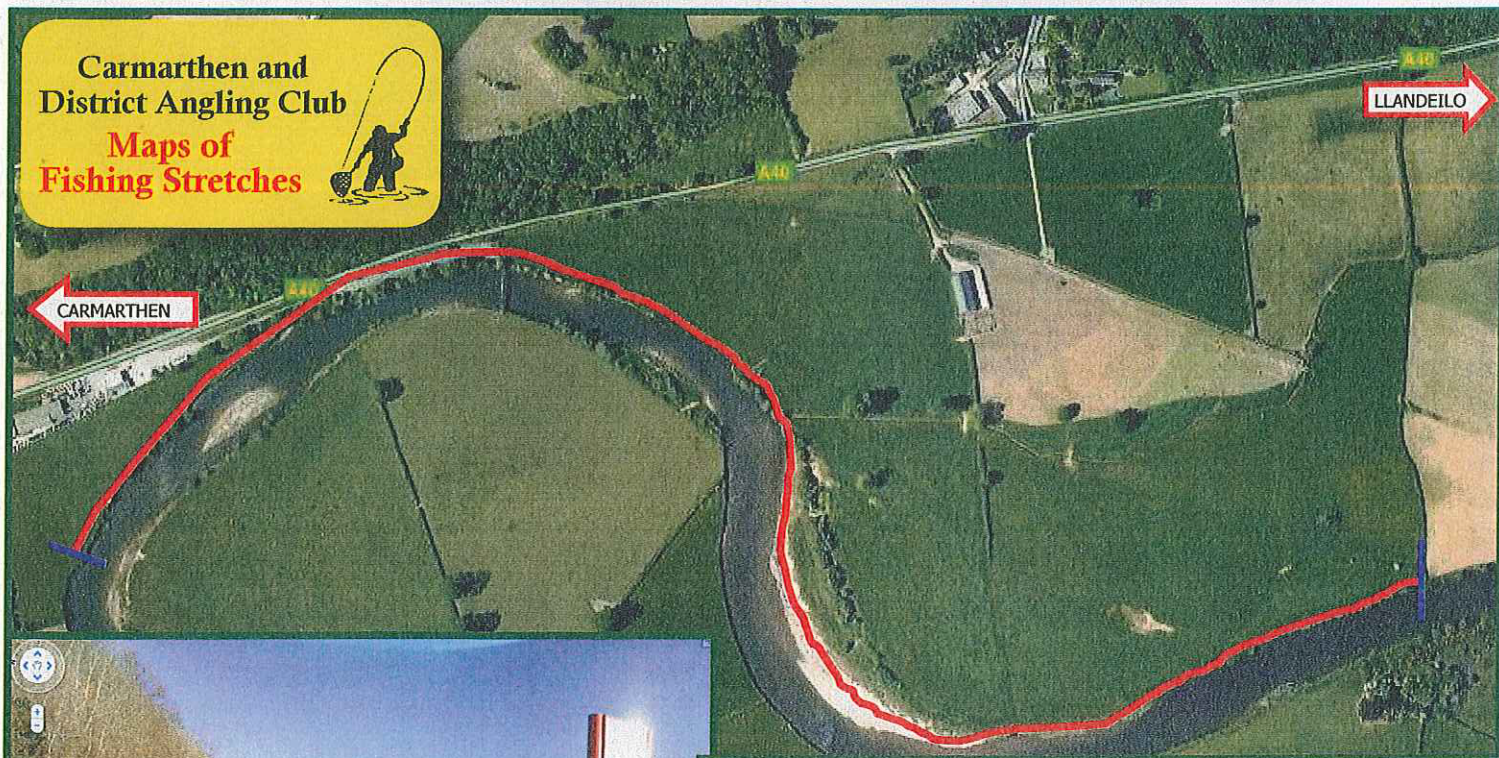
Easement

Right Of Way

Right of Access / Boundary line

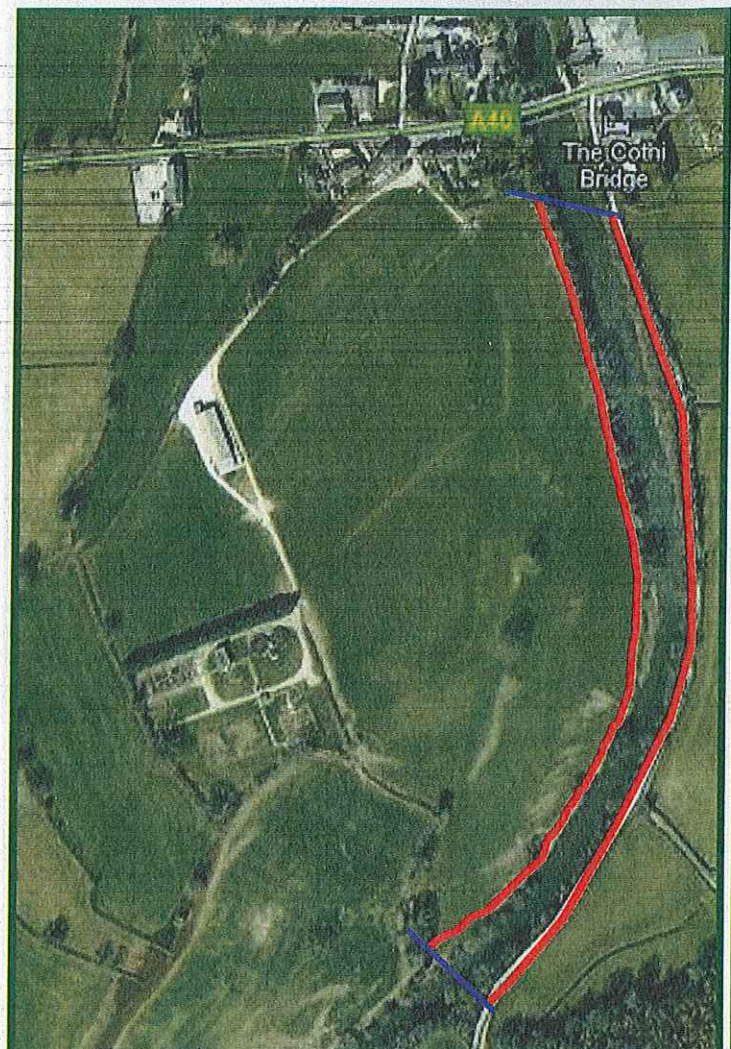


Carmarthen and District Angling Club Maps of Fishing Stretches



WHITEMILL FISHING WATER

Whitemill is our premier fishing water offering fantastic Salmon and Sewin opportunity throughout the whole season. You can worm, spin and fly with great success in almost any river condition, from the 1st April to the 7th October. Our waters are marked with the red line with the blue caps marking our boundaries. This stretch has 3 noted Pools, Railway, Herbert's and The Rocks. We have a car park situated on the Llandeilo side of the High Noon (Murco) Garage. Please respect the Country Code and take your litter home.



COTHI BRIDGE FISHING WATERS

The River Cothi is a fantastic spate river renowned for it's big Salmon and Sewin. You can fish this stretch from the 1st April to the 17th October, the final 10 days being subject to catch and release only, with methods of fishing being confined to fly and spinning during this period.

The pedestrian access point is shown above, situated approximately 50 yards from Pontargothi Bridge on the Carmarthen side, and anglers vehicles can be parked in the car park of the Pontargothi & District War Memorial Hall approximately 100 yards towards Carmarthen.

All vehicles are left at the owner's risk.



CARMARTHEN WATERS ACCESS POINT (Old Station Road)



CARMARTHEN FISHING WATER

The Morfa fishing stretches of Carmarthen are within the tidal range which means daily tidal replenishment of Salmon and Sewin into some excellent holding pools.

Notably, Rifes Pool, The Farm Pool, Stacy's Pool, Sandy Pool and The tinworks Pool, just to name a few, all offer fantastic fishing opportunity.

Our fishing Waters are marked with the red line. The dotted red line denotes access. The blue endcaps illustrate the boundaries of our waters.

As always please, respect the country code, close all gates, walk around the sides of fields and not across the middle, and take all litter home with you.

There is a small track as shown in the photo above. Drive down the track approximately 300 metres to the fisherman's Car Park. The river is immediately accessible from the parking area. As with all CDAC parking, vehicles are parked at owners risk.

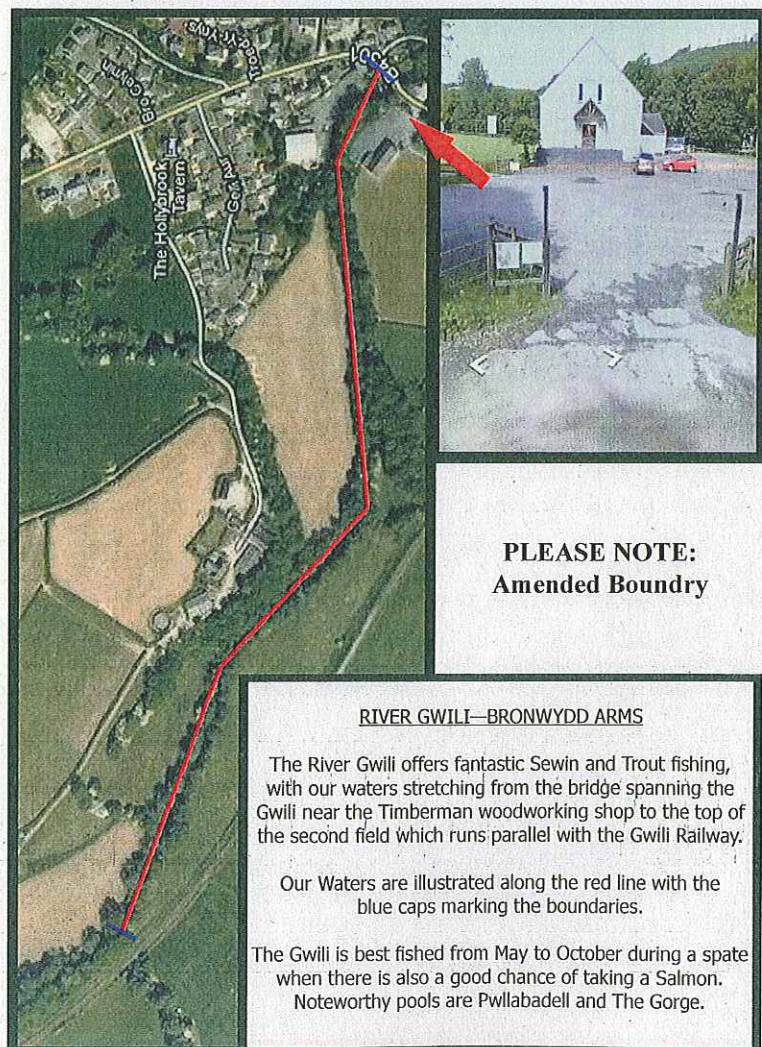


CAPEL DEWI FISHING WATER

This is our Capel Dewi stretch of fishing Water, noteworthy for both Salmon and Sewin, and open from the 1st of April to the 7th of October.

We have provided Car Parking facilities. Please respect the stated boundary lines and take your litter home with you.

There is one noted pool on the tail end of the stretch, The Bwlch, which is renowned for Salmon.



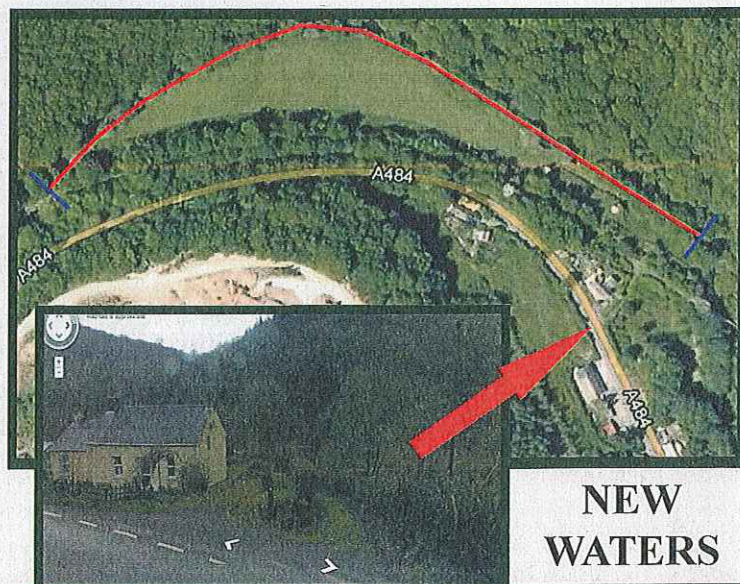
**PLEASE NOTE:
Amended Boundry**

RIVER GWILI—BRONWYDD ARMS

The River Gwili offers fantastic Sewin and Trout fishing, with our waters stretching from the bridge spanning the Gwili near the Timberman woodworking shop to the top of the second field which runs parallel with the Gwili Railway.

Our Waters are illustrated along the red line with the blue caps marking the boundaries.

The Gwili is best fished from May to October during a spate when there is also a good chance of taking a Salmon. Noteworthy pools are Pwllabaddell and The Gorge.



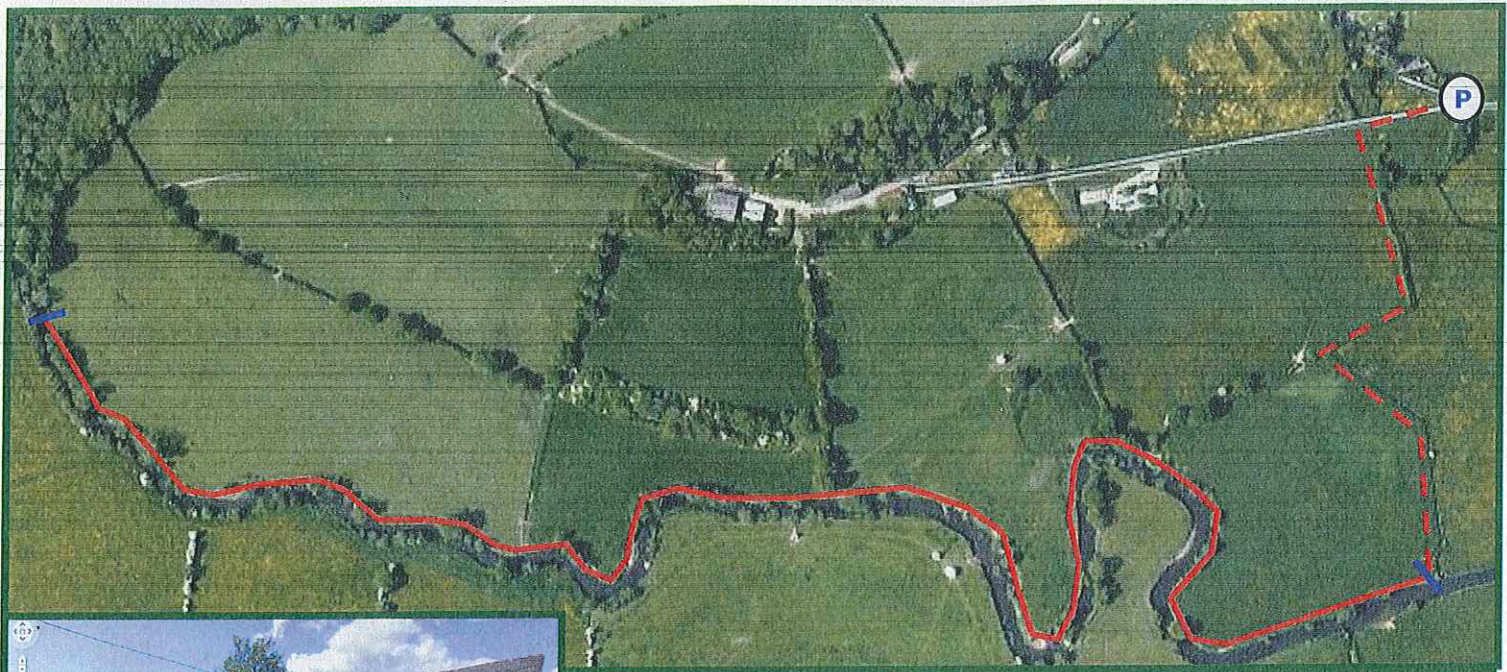
**NEW
WATERS**

RIVER GWILI — QUARRY STRETCH

New for 2012 we have acquired a new stretch on The Gwili situated near to the Barrett Timber Merchant and Railway Contractors.

The stretch covers the area between two bridges illustrated above with a mixture of runs & pools to fish.

This beat is best fished after a high water spate from mid season onwards with the chance to catch Sewin and Trout.



RIVER TAF FISHING WATER

CDAC has approximately one mile of fishing waters along the River Taf, which are excellent for Salmon, Sewin and Brown Trout.

Access can be gained via the junction in the picture off the main St Clears to Tenby Road near the Savoy Restaurant. You can follow the road for around one mile and park in the "P" designated area illustrated on the map. CDAC access is shown as the red dashed line and our waters are displayed as the solid red line. The blue endcaps mark the boundaries of our fishing water.

Please follow the Country Code, close all gates and take your litter home with you.



RIVER GWENDRAETH FISHING WATER

Our River Gwendraeth Fishing Waters offer excellent Sewin and Brown Trout opportunities. There is limited roadside parking available. Please follow the Country Code, Close all gates and take your litter home with you. Please visit our website and forums for further information and to post your catch reports.